

|                |   |         |       |      |            |          |     |
|----------------|---|---------|-------|------|------------|----------|-----|
| Classification | System and Application FAQ on WinCE PAC |         |       |      | No.        | 2-021-00 |     |
| Author         | Eric_Shiu                               | Version | 1.0.0 | Date | 2018/04/27 | Page     | 1/2 |

# How to enable/display Power management to control turn the display On/Off

Applies to:

| Platform       | OS version            | PAC utility version |
|----------------|-----------------------|---------------------|
| WinPAC series  | All versions (WinCE7) | All versions        |
| ViewPAC series | All versions (WinCE7) | All versions        |

## Display off (On to System Idle status)

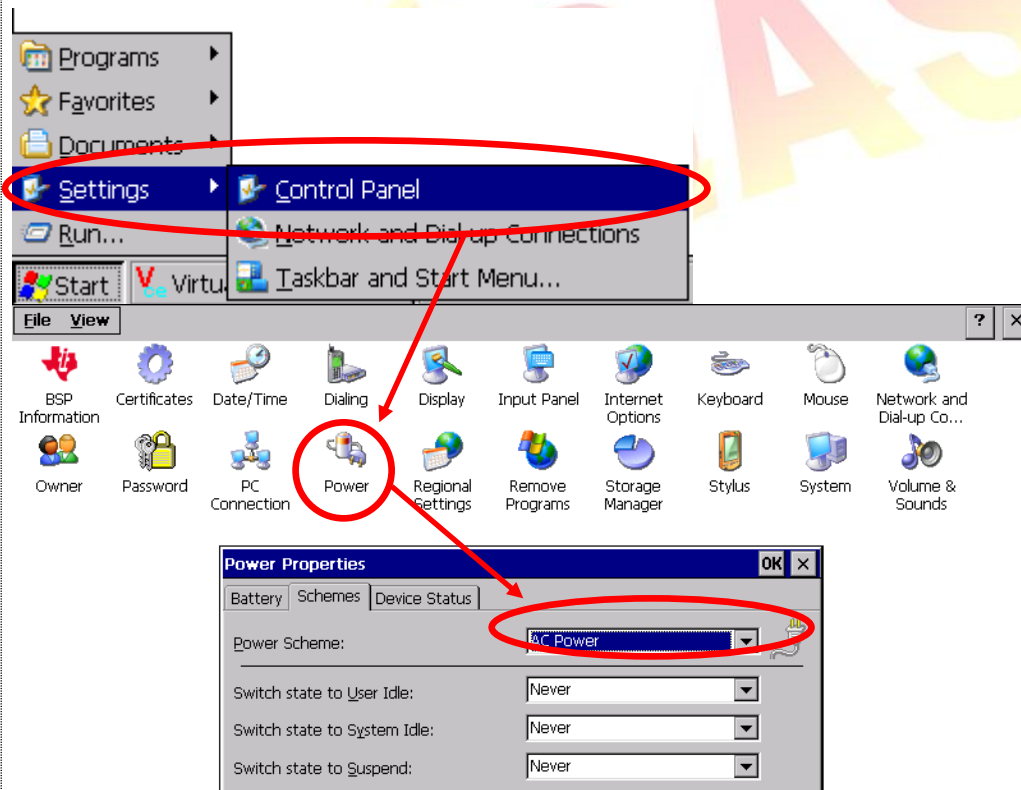
The display will be turned off automatically, while the system state is system idle.

## Recovery Display (System Idle to on status)

If you do nothing on WinPAC after 6 minutes (1 user idle time + 5 system idle time, the display will turn off. You can move mouse or press the keyboard button to wake up the display (turn the display on)

## Modified the system idle timeout

**Step1:** Click Start -->Control Panel-->Power-->Schemes->AC Power



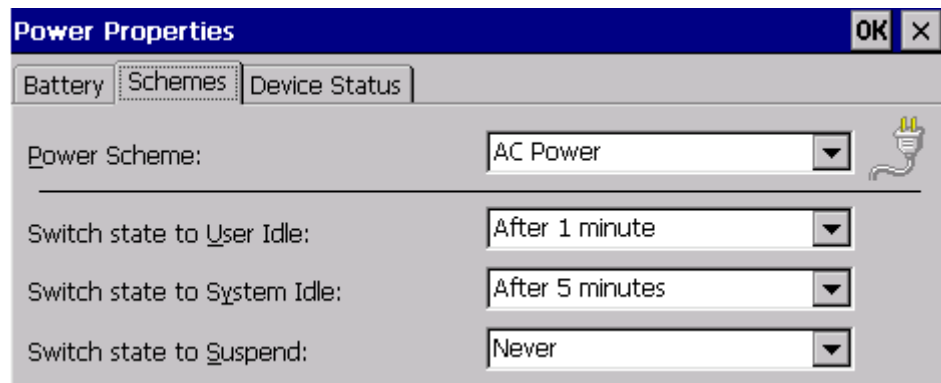
|                |   |         |       |      |            |          |     |
|----------------|---|---------|-------|------|------------|----------|-----|
| Classification | System and Application FAQ on WinCE PAC |         |       |      | No.        | 2-021-00 |     |
| Author         | Eric_Shiu                               | Version | 1.0.0 | Date | 2018/04/27 | Page     | 2/2 |

**Step2:** Select AC Power from Power Scheme

**Step3:** Modified the time value from "**Switch state to System Idle**"

**Step4:** Run WinPAC utility and click "Save and Reboot" to save the UI language.

**Note:** The default value for system Idle is 5 minutes

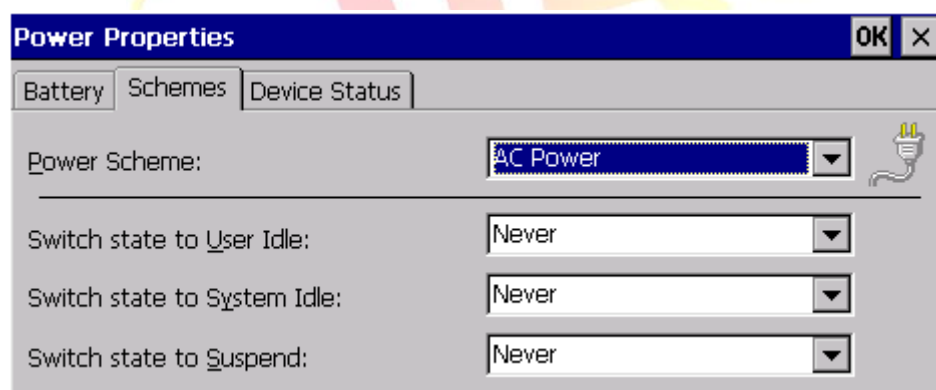


### Disable the display on/off by PM

**Step1:** Click Start -->Control Panel-->Power-->Schemes

**Step2:** Select AC Power from Power Scheme

**Step3:** Set the time value to Never on "**Switch state to System Idle**" and "**Switch state to User Idle**"



**Note:** The time value 0 of System Idle is to disable this function

**Note:**

=====

The OS have 4 different power states (On /User Idle/System Idle/Suspend) that will be the four states of the internal power manager state machine. The transition from On to User Idle and User Idle to Suspend is done after timers expirations

=====